



mess
·
kontrollieren
·
analysieren

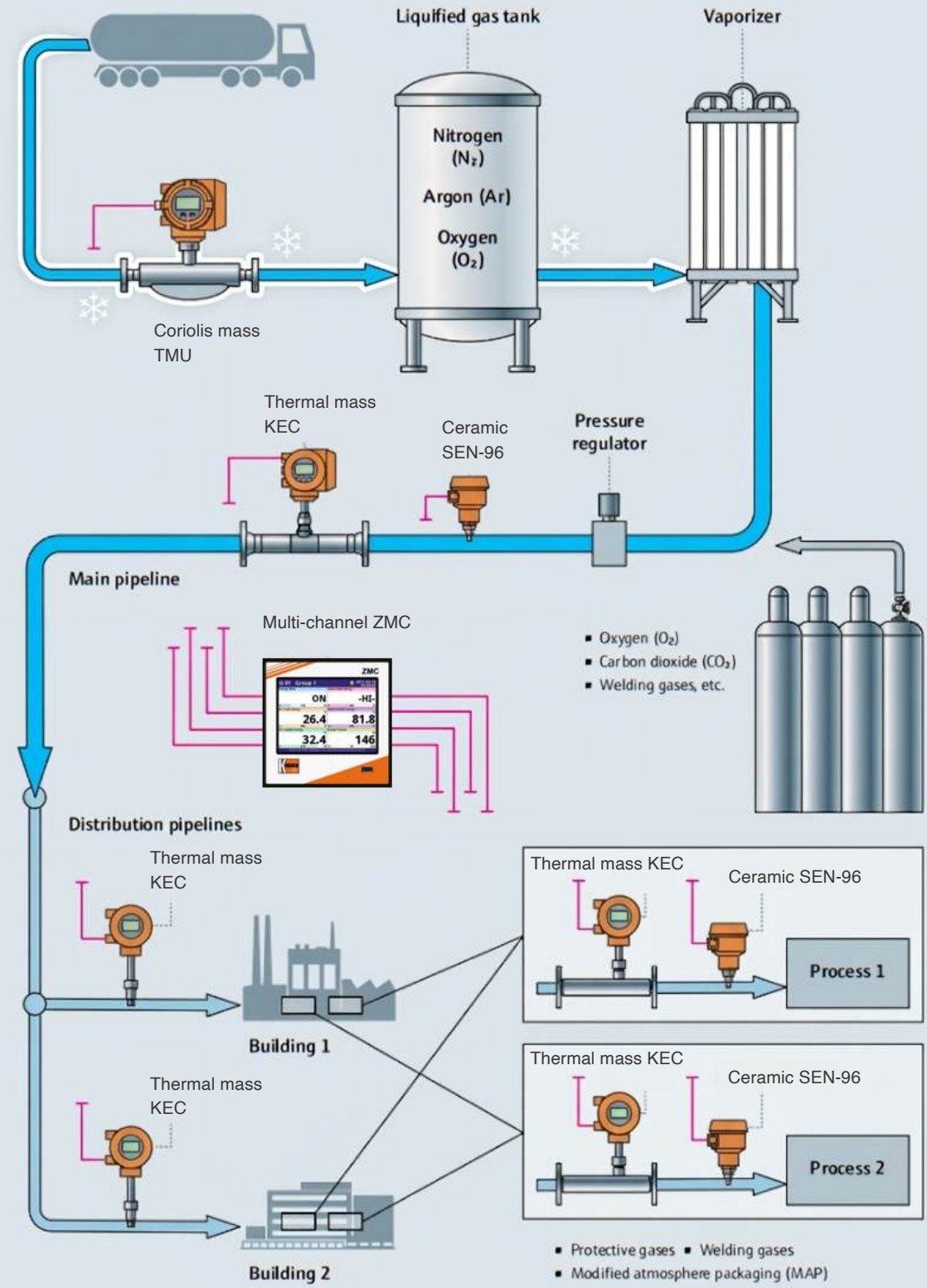


Reduce your energy costs in utilities stems 1

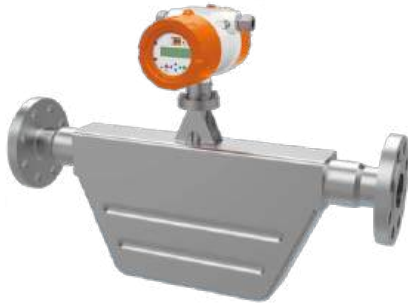
Industrial gases



Energy management in industrial gas systems



Kobold solution for Cooling systems



Flow measurement for cryogenic fluids

Model: Coriolis mass flow meter TMU

- Direct measurement of mass flow
- Measurement for liquid, gases and density
- Optional sensor heating
- Connection: ANSI ½" ...ANSI 16", DN10...DN400
- Output: 4 - 20 mA, HART®, mass flow, volume flow, density
- No straight inlet run, extreme compact lightweight design



Flow measurement (dry gases in main & distribution pipeline)

Model: Thermal mass KEC

- Direct mass flow rate measurement of gases
- Measuring accuracy: $\pm 1.0\%$ of reading (on request)
- p_{\max} 100 bar, t_{\max} 180 °C
- Fast response time
- No moving parts
- Analogue output, Modbus RTU and impulse output
- ATEX approval



Flow measurement for wet gases

Model: Vortex flow meter DVH

- Energy consumption (monitoring)
- p_{\max} : 100 bar abs; t_{\max} : 400°C
- Connection: ANSI ½" ...ANSI 8", DN15...DN200
- Output: 4 - 20 mA, HART® Protocol, Modbus
- Integrated temperature and pressure measurement
- Measurement of mass and density possible
- ATEX, IECEx



Pressure measurement

Model: PAS / Ceramic sensor SEN-96

- Data configuration with HART® configurator
- Measuring of gauge and absolute pressure
- Self-diagnostic function: sensor, memory A/D converter
- Digital communication with HART® protocol
- ATEX-approval



Temperature measurement

Model: Thermometers TTL-Exd

- Energy measurement for feed or return line
- Measuring range max. 180 °C
- Fast response time
- Headtransmitter with HART®-protocol or PROFIBUS®
- Output: sensor type or analogue 4-20 mA
- ATEX approval



Data Logger

Model: Multi-Channel ZMC

- Multi-Channel controller
- Communication: RS-485/232, USB Host, Ethernet
- Calculation functions: mass, energy, density....etc
- Protocol: Modbus RTU Master or Slave, Modbus TCP Server
- Display: graphic TFT 3,5" or 5,7" , touchscreen
- Data memory: 4 GB